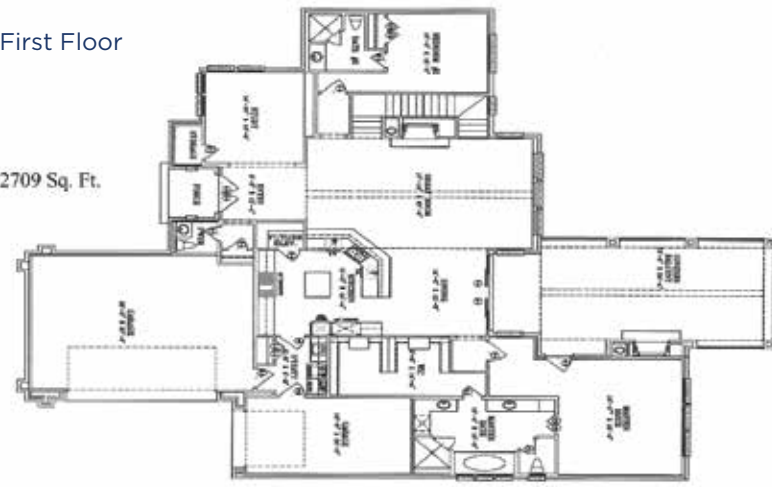


First Floor

2709 Sq. Ft.



Ground Floor
(Basement Level)

1202 Sq. Ft.



AVAILABLE

117 BLUE HERON DRIVE



The Community of Beacon Hill provides Luxury Lakefront living for the discriminating buyer that wants the comforts of home while enjoying the relaxation that only nature and beauty can provide. This desirable and prestigious custom built luxury lake view home is awaiting you! Only a tour provides you the opportunity to experience the extraordinary views available throughout the home from this premier location.

Call for an appointment today!
903-498-LAKE (5253)

LUXURY. LAKE. COMMUNITY.

These three words embody the vision of Beacon Hill.



903-498-LAKE (5253) • www.LiveatBeaconHill.com

Custom Luxury Home

Interior Features

Bedrooms: 4
Full Baths: 4
Half Baths: 1
Design Desc: Contemporary, Split Level
Dining Rooms: 1
Fireplaces: 4
Interior Features Description:
Built in SS Thermador Refrigerator,
Dishwasher, Commercial grade SS Thermadore
Range and Vent hood, Double Ovens
Living Room Desc: 24x18
Living Rooms: 2
Master Bed Desc: 19x15
Rec Room Desc: 18x17
Rooms: 14
SQFT: 4693

Exterior Features

Exterior Features Description:
Stone, Stucco with Contemporary
Sustainable Accents
Garage: 3
Lot Size: 0 ft
Stories: 2
Style: Contemporary

Utilities

Central Air: Electric
Heating Desc: Gas, Propane
MUD: Kemp
Utilities: City Water, City
Sewer, Cable

